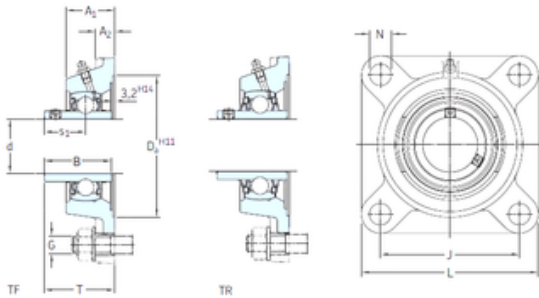




BEARING DRIVESHAFT ANDERSON, INC.

SKF FYM 1.11/16 TF Bearing unit

Bearing No. FYM 1.11/16 TF



FYM 1.11/16 TF Bearing 2D drawings and 3D CAD models

Bore Diameter	42,863 mm
Width	51,6 mm
d	42,863 mm
s1	32,6 mm
A1	43 mm
B	51,6 mm
G	14 mm
J	111 mm
L	143 mm
T	60,6 mm
A2	15 mm
Weight	2,5 Kg
Basic dynamic load rating (C)	35.1 kN
Basic static load rating (C0)	23.2 kN
Fatigue load limit (Pu)	0.98
Category	Flange Block Bearings
Inventory	0.0
Manufacturer Name	SKF
Minimum Buy Quantity	N/A
Weight / Kilogram	2.583
Product Group	M06110
Number of Mounting Holes	4
Mounting Method	Set Screw
Housing Style	4 Bolt Square Flange Block
Rolling Element	Ball Bearing
Housing Material	Cast Iron



BEARING DRIVESHAFT ANDERSON, INC.

Expansion / Non-expansion	Non-expansion
Mounting Bolts	9/16 Inch
Relubricatable	Yes
Insert Part Number	YAR 210-111-2F
Seals	M Seal
Housing Configuration	1 Piece Solid
Pilot Configuration	No Pilot
Inch - Metric	Inch
Long Description	4 Bolt Square Flange Block; 1-11/16" Bore; 6.2" Bolt Circle; 4.37" Bolt Spacing; 1 Piece Solid; Set Screw Mount; Cast Iron; Ball Bearing; 2.032" Length Thru Bore; Relubricatable; M
Other Features	Single Row Medium Duty Wide Inner Race Open End Has Flinger
Category	Flange Block
UNSPSC	31171501
Harmonized Tariff Code	8483.20.40.40
Noun	Bearing
Keyword String	Flanged
Manufacturer URL	http://www.skf.com
Manufacturer Item Number	FYM 1.11/16 TF
Weight / LBS	5.98
Cartridge Pilot Diameter	0 Inch 0 Millimeter
Length Thru Bore	2.032 Inch 51.613 Millimeter
Cartridge Pilot Depth	0 Inch 0 Millimeter
Nominal Bolt Circle Diameter Round	6.2 Inch 157 Millimeter
Bolt Spacing	4.37 Inch 111 Millimeter
Bore	1.688 Inch 42.875 Millimeter



BEARING DRIVESHAFT ANDERSON, INC.

bore diameter:	1.6875 in
radial static load capacity:	5220 lbf
bolt center-to-center length:	4.3750 in
seal type:	Contact Seal
overall length/diameter:	143 mm
length through bore:	60.6 mm
bore type:	Round
finish/coating:	Uncoated
duty type:	Medium Duty
maximum rpm:	4000 RPM
mounting type:	Four-Bolt Flange
lubrication type:	Lubrication Fitting
housing material:	Cast Iron
series:	FYM
locking device:	Set Screw
replacement bearing:	YAR 210-111-2F
expansion type:	Non-Expansion Bearing (Fixed)
manufacturer upc number:	7316577755131
radial dynamic load capacity:	7900 lbf