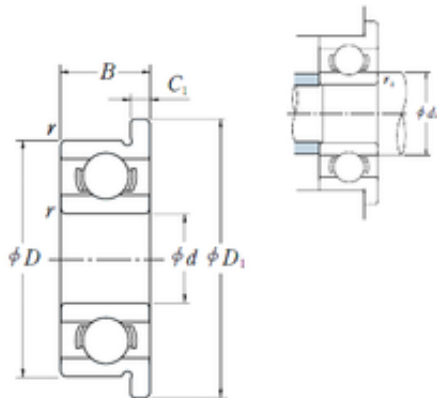




BEARING DRIVESHAFT ANDERSON, INC.



3,967 mm x 7,938 mm x 2,779 mm ISO FR155
Ball bearing

Bearing No. FR155

Size	3.967x7.938x2.779 mm
Bore Diameter	3,967 mm
Outer Diameter	7,938 mm
Width	2,779 mm
d	3,967 mm
D	7,938 mm
D1	9,119 mm
B	2,779 mm
C	2,779 mm
r min.	0,1 mm
C1	0,58 mm

FR155 Bearing 2D drawings and 3D CAD models